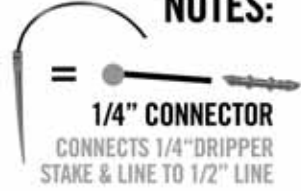




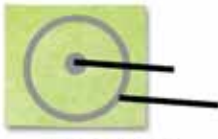
4X8 (3X6) TRAY DRIP CONFIGURATION

(50 PLANT SETUP WITH PARTS)

NOTES:

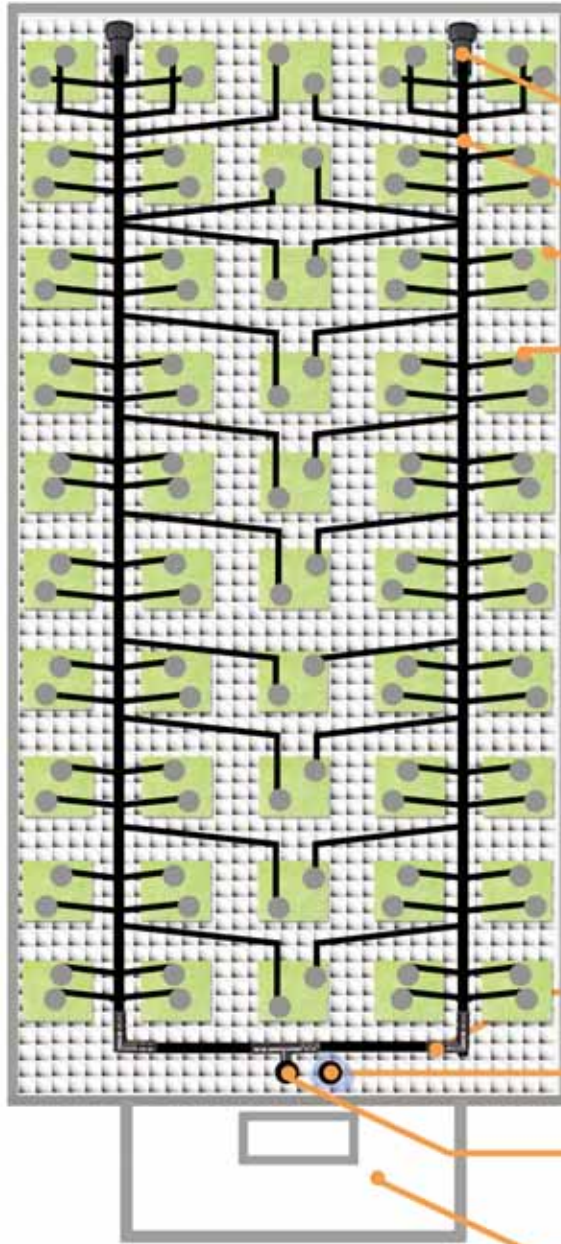


1/4" CONNECTOR
CONNECTS 1/4" DRIPPER
STAKE & LINE TO 1/2" LINE



DRIP CIRCLE
ALT. (BETTER) METHOD:
CREATES MORE EVEN FLOW

**SLOPE OF
TRAY**



COMPONENTS:

1/2" END CAP

1/2" DRIP LINE

6" ROCKWOOL

**1/4" LINE &
DRIPPER STAKE**

1/2" ELBOW

3/4" DRAIN FITTING

**1/2" TEE CONNECTED
TO PUMP BELOW
RESERVOIR**

Alternate Drain to Waste Configuration

If Running a Drain to Waste System - Add a second reservoir. Slope the Tray away from the "Main" reservoir (with the Pump) instead of towards the "Main" Reservoir. For more information on Drain to Waste Systems and why you should run one - Please turn this "info sheet" over and / or look to the "info sheet" on **Drain to Waste / Flushing**.

3560 STATE STREET
SANTA BARBARA, CA 93105
PHONE: 805.898.9922
FAX: 805.898.0047

5900 E. SPRING STREET #F
LONG BEACH, CA 90815
PHONE: 562.627.5636
FAX: 562.627.1618

496 W. MEATS AVE.
ORANGE, CA 92865
PHONE: 714.974.4769
FAX: 805.921.4769

© 2007 GCH, INC.
www.gchydro.com
info@gchydro.com
TOLL FREE: 877.MY.HYDRO
88 48376





4x8 (3x6) TRAY DRIP CONFIGURATION

50 PLANT SETUP - PARTS LIST

NECESSARY SUPPLIES:

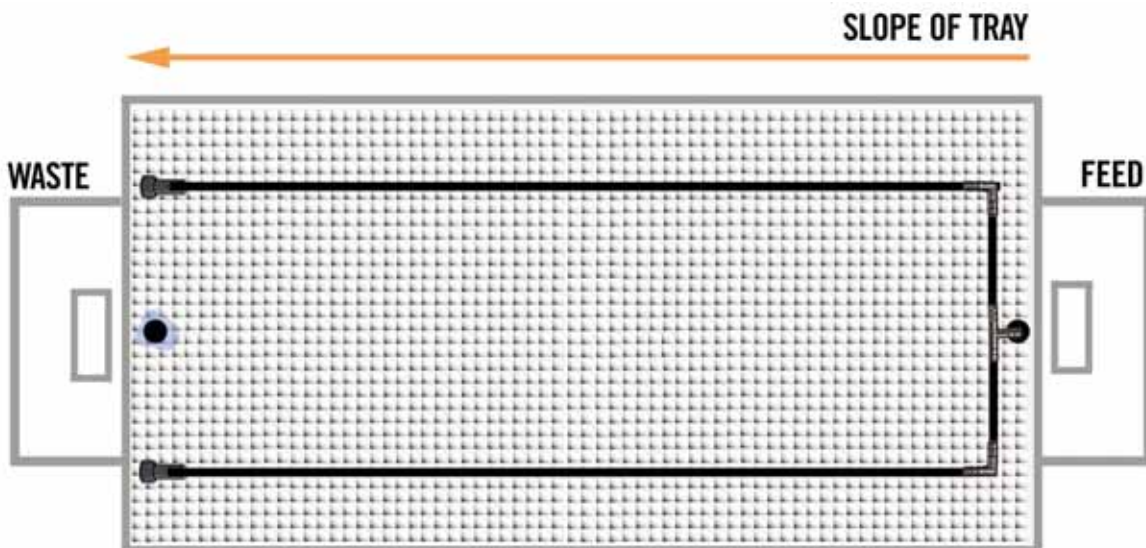
- 4 x 8 Grow Tray (or 3 X 6 Grow Tray)
- 40-70 Gallon Reservoir (*This can be a rubber-maid tub to save money*)
- (50) Hugo 6" Rockwool Blocks
- 150 ft. of 1/4" Tubing
- 20 ft. of 1/2" Tubing
- (2-3) 50 Packs of 1/4" Connectors
- (100) Drip Stakes
- (2) Compression End Caps
- (1) 3/4" Bulkhead Drain Fitting
- (1) Screen for Drain Fitting
- (1) 1" Bulhead Fitting
- (1) Riser for 1" Bulkhead
- (3) 1/2" Elbow Fitting
- (1) 1/2" Tee Fitting
- (50) 6" HUGO Rockwool Blocks

Fittings necessary to make Drip Rings (*Please also see **Drip Ring Info Sheet***):

- (5-6) 50 Pack of 1/4" Tees = (5) 1/4" Tee's per Ring x 50 Rings
- 50 ft. of 1/4" Tubing = (50) 5" Diameter Drip Rings

RUNNING DRAIN TO WASTE:

Drain to Waste is alternative method to running a system vs. Recirculating. We prefer it mainly because it provides "FRESH" nutrients to plant sites, and much less prone to spreading disease or pathogens between plant sites. Below is an outline of how to alter the system in order to run a drain to waste style drip configuration. Please refer to the "info sheet" on **Drain to Waste / Flushes** for more info.



3560 STATE STREET
SANTA BARBARA, CA 93105
PHONE: 805.898.9922
FAX: 805.898.0047

5900 E. SPRING STREET #F
LONG BEACH, CA 90815
PHONE: 562.627.5636
FAX: 562.627.1618

496 W. MEATS AVE.
ORANGE, CA 92865
PHONE: 714.974.4769
FAX: 805.921.4769

© 2007 GCH, INC.
www.gchydro.com
info@gchydro.com
TOLL FREE: 877.MY.HYDRO
89 49376

